

# OBH kit installation instructions

## PACKAGE CONTENTS

- 1 OBH helmet base with
- integrated burglar alarm
- 1 OBH helmet
- 1 NFC badge
- 1 KlickFix fixation system
- 1 helmet base charger
- 1 installation guide

## PUTTING THE KLICKFIX

1. Take the KLICKFIX fixation and install it on your handlebars or scooter frame.

2. Secure the KLICKFIX with the screws supplied in the OBH kit. An installation guide is included in the box, read it carefully for a quick installation (2min).

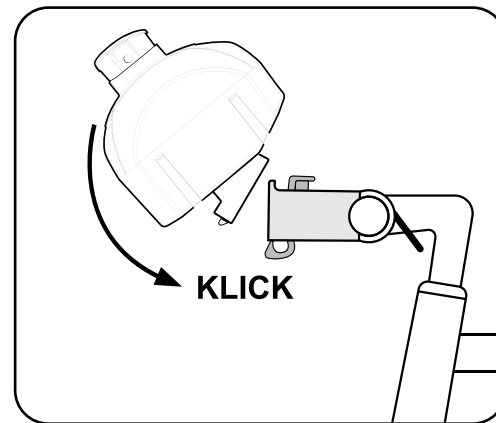
## STARTING UP AND CONFIGURING THE HELMET BASE FOR THE FIRST TIME

To control your base, it's necessary to connect it for the first time using the OBH application, which identifies you as the owner of the helmet base and enables you to configure its operation.

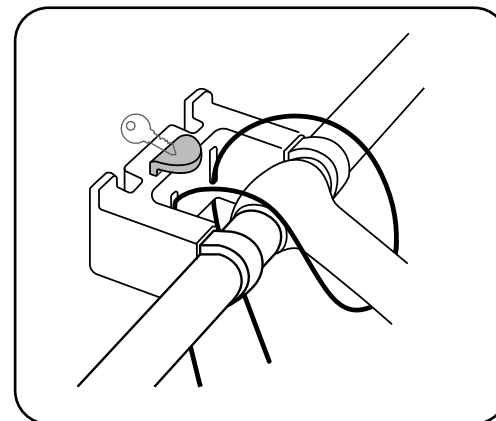
1. Download the OBH app on your phone (android or ios)
2. Once downloaded, create your account by following the app's instructions.
3. Once your base is configured via the app, install it on your bike/scooter.

## INSTALL THE BASE ON YOUR BIKE/SCOOTER

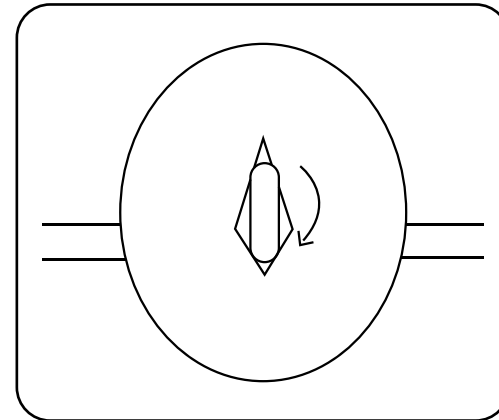
1. Position the base on your Klickfix. To do this, place the notch on the back of the base over the red hooks on the Klickfix. You should hear a «Klick» to ensure that the base is correctly positioned.



2. Use the key supplied in the klickfix box to lock the red button, thus securing your base against theft. Be sure to keep this key in a safe place. You won't need this key every day, your base is secure. When your dock runs out of battery, you can use this key to detach it and charge the dock, for example.



3. You can now use your base and position your helmet on it. Pull the handle and turn it to the right to lock your helmet.



## UNINSTALL YOUR KIT

To resell, pass on or donate your OBH kit : you must no longer be the owner. Go to the OBH application and indicate that you no longer wish to be the owner in the «Base settings» section, and follow the procedure.

If you need more badges, or if you've lost your badge, you can order some from the OBH Mobilty website ([www.obh-mobility.com](http://www.obh-mobility.com))

## END OF LIFE HELMET

Our OBH helmet can be recycled. Please find out more about the recycling program on the obh website([www.obh-mobility.com](http://www.obh-mobility.com)).

## MAINTENANCE TIPS

Clean the base and headset regularly with a soft, damp cloth. Avoid aggressive chemicals.

## POTENTIAL HAZARDS AND PRECAUTIONS

### General precautions

- Do not swallow : Small parts and batteries can be dangerous if swallowed. Keep out of reach of children

- Water depth : Do not immerse the base in water deeper than 2 meters.

- Extreme temperatures: Avoid exposing the base and alarm to extreme temperatures (below -15°C or above 50°C).

- Charging ports: Do not insert fingers into the charging ports to avoid risk of injury or damage to the equipment.

- Opening the base: Do not attempt to open the base. Any internal manipulation could damage the device and void the warranty.

- Alarm: Do not block the alarm hole and do not press inside. This could affect its operation.

- Cleanliness: Avoid introducing dust into the axis of the handle.

- Falls: Do not let the base fall to the ground. This could cause irreparable damage.

- Compatible headphones: Use only headphones from the OBH range on the base to ensure compatibility.

- Using the alarm: Do not activate the alarm in the immediate proximity to the ears to avoid hearing damage.

### Helmet precautions

- Minimum age: This product not suitable for children under 12 years of age.

- Safety standard: This helmet complies with the requirements of EN1078 standard.

- The helmet does not always protect against all injuries in the event of a fall or serious accident.

- After a "severe impact", the helmet must be discarded and destroyed even if there is no visible damage.

- The helmet protects your head only if it has been adjusted to fit your head size.

- The buckle must not rest on the jawbone; it must be positioned so as to tighten firmly without interfering.

- Buckle and strap adjustment straps: The straps and buckle should be adjusted to hold the helmet firmly without causing discomfort.

- The helmet must be worn to protect the forehead. it is not advisable to place it too far back to avoid reducing protection.

- Conditions of use: This helmet is designed to be used urban cycling, skateboarding or rollerblading. It is not intended for other sports.

- Precautions: Avoid unnecessary and do not leave the helmet exposed to chemicals or excessive heat.

- Modification: Any modification or removal of components of the helmet may reduce product safety. The modifications should only be made only in accordance manufacturer's recommendations.

- Accessories: Do not attach accessories to the helmet using methods not recommended by the manufacturer, as this may alter its protective .

- Service life: the helmet is designed for a service life of 3 years. After this period, the materials age and it is recommended to renew your helmet

- Cleaning: Use a soft cloth and lukewarm water. Avoid contact with hydrocarbons, cleaning products, paints or stickers. These substances may damage the helmet.

## ASSISTANCE

don't hesitate to contact us:

Email : [hello@obh-mobility.com](mailto:hello@obh-mobility.com)  
Phone : 07 66 71 29 52  
Website : [www.obh-mobility.com](http://www.obh-mobility.com)

Thank you for choosing the OBH Kit! We wish you safe and enjoyable safe journey.

If you have any questions or require assistance,